

William Mazza Studio Pricelist

135 Ocean Parkway, Apt. 15E, Brooklyn, NY, 11218



as of Feb 1, 2025

All work* professionally framed with museum glass (UV resistant), ready to hang.

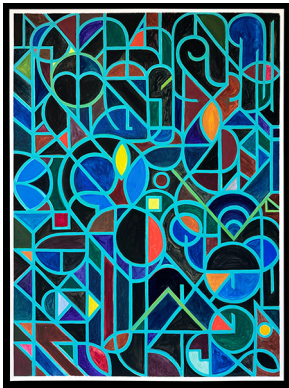


01

"John Berger (Tim Overton, Ed.), *Landscapes: John Berger on Art*, pg. 140 | Literary Landscapes | 2024"

22" x 30" (29" x 37" framed), gouache on board, 2024

Price: \$2,450. (includes annotated copy of book)

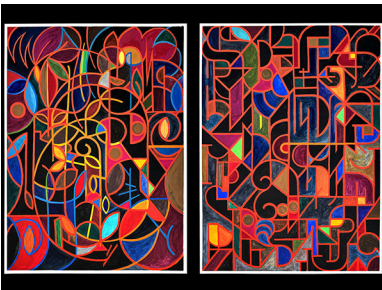


02

"Magic Eight Ball, No. 10 | Literary Landscape Cover Series (redux) | 2024"

22" x 30" (29" x 37" framed), gouache on board, 2024

Price: \$2,450. (includes signed Magic Eight Ball)

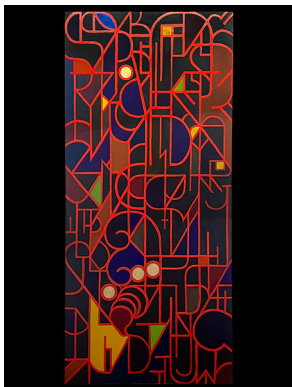


03

"Leslie Fienberg, 'Stone Butch Blues,' No. 14 & Minnie Bruce Pratt, 'S/He,' No. 19 | Literary Landscape Cover Series | 2024" (Diptych)

Two individually framed 22" x 30" (29" x 37" framed - approximately 37"x60" hung side by side), gouache on board, 2024

Price: \$4,800. (includes an annotated copy of both books)



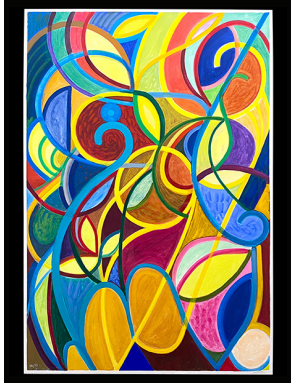
04*

Minnie Bruce Pratt, *S/He*, No. 18 | Literary Landscape Cover Series | 2023" (Diptych)

38" x 80", acrylic on panel, 2023 Price: \$4,800 (includes annotated copy of each book)

Price: \$3,780. (includes annotated copy of book)

*unframed panel, painted edges, includes french cleat for wall installation.

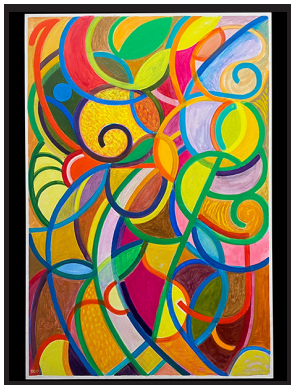


05

"Sally Roesch Wagner, *Sisters in Spirit: Haudenosaunee (Iroquois) Influence on Early American Feminists*, No. 16 | Literary Landscape Cover Series | 2023"

20" x 30" (30" x 40" framed), gouache on board, 2023

Price: \$2,350. (includes annotated copy of book)

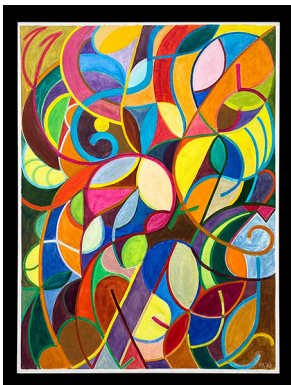


06

"Sally Roesch Wagner, *Sisters in Spirit: Haudenosaunee (Iroquois) Influence on Early American Feminists*, No. 15 | Literary Landscape Cover Series | 2023"

20" x 30" (30" x 40" framed), gouache on board, 2023

Price: \$2,350. (includes annotated copy of book)



07

"Sally Roesch Wagner, *Sisters in Spirit: Haudenosaunee (Iroquois) Influence on Early American Feminists*, No. 14 | Literary Landscape Cover Series | 2023"

16" x 20" (27" x 30" framed), gouache on board, 2023

Price: \$2,050. (includes annotated copy of book)

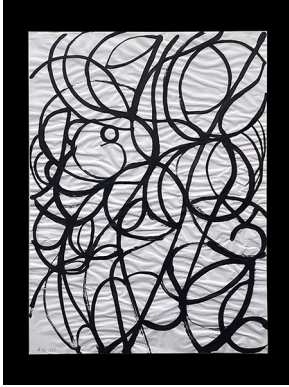


08

"Sally Roesch Wagner, *Sisters in Spirit: Haudenosaunee (Iroquois) Influence on Early American Feminists*, No. 11 | Literary Landscape Cover Series | 2023"

9.5" x 13" (16" x 20" framed), ink on paper, 2023

Price: \$750.

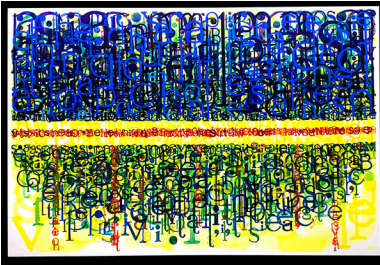


09

"Sally Roesch Wagner, *Sisters in Spirit: Haudenosaunee (Iroquois) Influence on Early American Feminists*, No. 10 | Literary Landscape Cover Series | 2023"

9.5" x 13" (16" x 20" framed), ink on paper, 2023

Price: \$750.

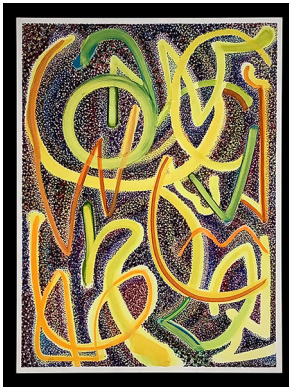


10

"Kevin Van Meter, *Guerrillas of Desire: Notes on Everyday Resistance and Organizing to Make a Revolution Possible*," pg 28 | Literary Landscape | 2023"

20" x 30" (30" x 40" framed), gouache on board, 2023

Price: \$2,350. (includes annotated copy of book)

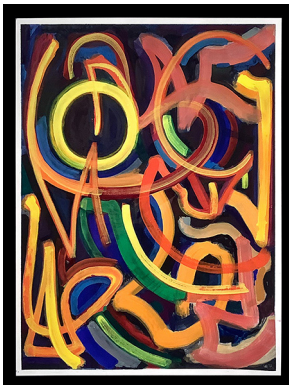


11

"Silvia Federici, *Witches, Witch-Hunting, and Women*, No. 27 | Literary Landscape Cover Series | 2023"

15" x 20" (25" x 30" framed), gouache on board, 2023

Price: \$1,920. (includes annotated copy of book)

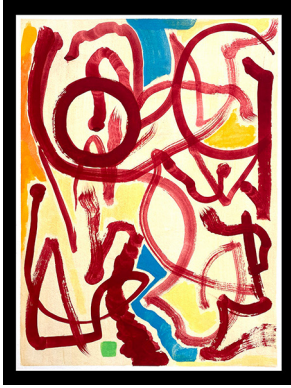


12

"Silvia Federici, *Witches, Witch-Hunting, and Women*, No. 26 | Literary Landscape Cover Series | 2023"

15" x 20" (25" x 30" framed), gouache on board, 2023

Price: \$1,920. (includes annotated copy of book)



13

"Silvia Federici, *Witches, Witch-Hunting, and Women*, No. 25 | Literary Landscape Cover Series | 2022"

15" x 20" (25" x 30" framed), gouache on board, 2022

Price: \$1,920. (includes annotated copy of book)



14

"Silvia Federici, *Witches, Witch-Hunting, and Women* No. 24 | Literary Landscape Cover Series | 2022"

15" x 20" (25" x 30" framed), gouache on board, 2022

Price: \$1,920. (includes annotated copy of book)



15

"Silvia Federici, *Witches, Witch-Hunting, and Women*, No. 21 | Literary Landscape Cover Series | 2022"

9.5" x 13" (16" x 20" framed), gouache on board, 2022

Price: \$750.



16

"Silvia Federici, *Witches, Witch-Hunting, and Women*, No. 19 | Literary Landscape Cover Series | 2022"

9.5" x 13" (16" x 20" framed), gouache on board, 2022

Price: \$750.



17

"Silvia Federici, *Witches, Witch-Hunting, and Women*, No. 18 | Literary Landscape Cover Series | 2022"

9.5" x 13" (16" x 20" framed), ink on paper, 2022

Price: \$750.

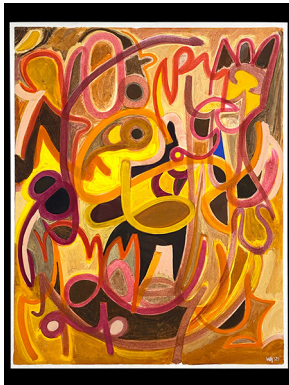


18

"Silvia Federici, *Witches, Witch-Hunting, and Women*, No. 15 | Literary Landscape Cover Series | 2022"

9.5" x 13" (16" x 20" framed), ink on paper, 2022

Price: \$750.

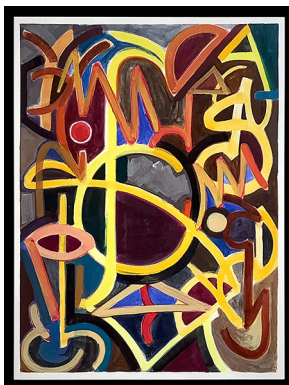


19

"Susan Sontag; Ed. David Rieff, *As Consciousness Is Harnessed to Flesh: Journals and Notebooks, 1964-1980*, No. 11 | Literary Landscape Cover Series | 2021 "

16" x 20" (27" x 30" framed), gouache on board, 2021

Price: \$2,050. (includes annotated copy of book)



20

"Franklin Rosemont and Robin D.G. Kelley (eds.), *Black, Brown & Beige: Surrealist Writings from Africa and the Diaspora*, No. 16 | Literary Landscape Cover Series | 2021"

15" x 20" (25" x 30" framed), gouache on board, 2021

Price: \$1,920. (includes annotated copy of book)



21

"Franklin Rosemont and Robin D.G. Kelley (eds.), *Black, Brown & Beige: Surrealist Writings from Africa and the Diaspora*, No. 13 | Literary Landscape Cover Series | 2021"

9.5" x 13" (16" x 20" framed), ink on paper, 2021

Price: \$750.



22

"Franklin Rosemont and Robin D.G. Kelley (eds.), *Black, Brown & Beige: Surrealist Writings from Africa and the Diaspora*, No. 9 | Literary Landscape Cover Series | 2021"

9.5" x 13" (16" x 20" framed), ink on paper, 2021

Price: \$750.



23

"George E. Lewis, *A Power Stronger Than Itself: The AACM and American Experimental Music*, No. 12 | Literary Landscape Cover Series | 2020"

16" x 20" (27" x 30" framed), gouache on board, 2020

Price: \$2,050. (includes annotated copy of book)



24

"George E. Lewis, *A Power Stronger Than Itself: The AACM and American Experimental Music*, No. 11 | Literary Landscape Cover Series | 2020"

9" x 13.5" (16" x 20" framed), ink on paper, 2020

Price: \$750.



25

"Peter Gelderloos, *Worshiping Power: An Anarchist View of Early State Formation*, pg 210 | Literary Landscape | 2020"

20" x 30" (30" x 40" framed), gouache on board, 2020

Price: \$2,350. (includes annotated copy of book)



26

"Voltairine de Cleyre; ed. Alexander Berkman, *Selected Works of Voltairine de Cleyre: Poems, Essays, Sketches and Stories, 1885-1911 No. 14* | Literary Landscape Cover Series | 2020"

16" x 20" (27" x 30" framed), gouache on board, 2020

Price: \$1,950. (includes annotated copy of book)

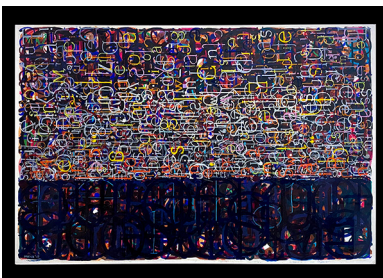


27

"Voltairine de Cleyre; ed. Alexander Berkman, *Selected Works of Voltairine de Cleyre: Poems, Essays, Sketches and Stories, 1885-1911, No. 13* | Literary Landscape Cover Series | 2020"

16" x 20" (27" x 30" framed), gouache on board, 2020

Price: \$1,950. (includes annotated copy of book)



28

"Freddy-Perlman, *Against His-story Against Leviathan*, pg 254 | Literary Landscape | 2019"

20" x 30" (30" x 40" framed), gouache on board, 2019

Price: \$2,350. (includes annotated copy of book)



29

"James Brandon Lewis, *An UnRuly Manifesto*, No. 13 | Literary Landscape Cover Series | 2019"

8" x 9.5" (14" x 18" framed), gouache on board, 2019

Price: \$1,300. (includes annotated compact disc)



30

"adrienne maree brown, *Emergent Strategy: Shaping Change, Changing Worlds*, No. 12 | Literary Landscape Cover Series | 2019"

15" x 20" (25" x 30" framed), gouache on board, 2019

Price: \$1,920. (includes annotated copy of book)



31

"Jayne Cortez, 'Give Me the Red on the Black of the Bullet (For Claude Reece Jr.)', *Mouth on Paper*, pg. 10-11 | Literary Landscape | 2018"

12" x 15" (16" x 20" framed), gouache on paper, 2018

Price: \$1,920. (includes annotated copy of book)



32

"Susan Sontag; Ed. David Rieff, *As Consciousness Is Harnessed to Flesh: Journals and Notebooks, 1964-1980*, No. 10 | Literary Landscape Cover Series | 2017"

16" x 20" (approx 27" x 30" framed), gouache on board, 2017

Price: \$2,050. (includes annotated copy of book)



33

"Susan Sontag; Ed. David Rieff, *As Consciousness Is Harnessed to Flesh: Journals and Notebooks, 1964-1980*, No. 8 | Literary Landscape Cover Series | 2017"

9" x 13.75" (16" x 20" framed), ink on paper, 2017

Price: \$750.



34

"Susan Sontag; Ed. David Rieff, *As Consciousness Is Harnessed to Flesh: Journals and Notebooks, 1964-1980*, No. 5 | Literary Landscape Cover Series | 2017"

9" x 13.75" (16" x 20" framed), ink on paper, 2017

Price: \$750.

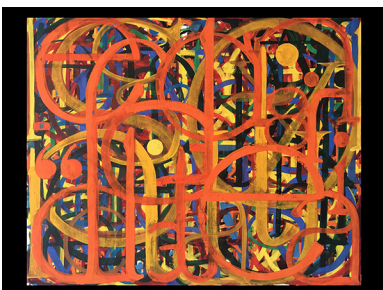


35

"John Clark and Camille Martin (ed. & trans.), *Anarchy, Geography, Modernity: Selected Writings of Elisée Reclus*, p. 124 | Literary Landscape | 2017"

16" x 20" (27" x 30" framed), gouache on board, 2017

Price: \$2,050. (includes annotated copy of book)



36

"Angela Davis, *Abolition Democracy: Beyond Empire, Prisons, and Torture*, pg. 83 | Literary Landscape | 2016"

16" x 20" (27" x 30" framed), gouache on paper, 2016

Price: \$2,050. (includes annotated copy of book)

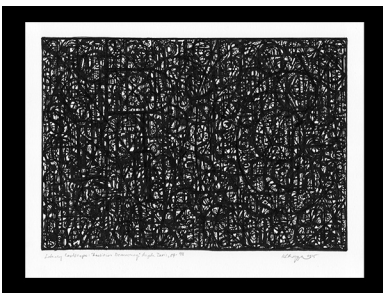


37

"Eileen Myles, "Inferno," pg218 | Literary Landscape | 2014"

15" x 20" (25" x 30" framed), gouache on board, 2014

Price: \$1,950. (includes annotated copy of book)



38

"Angela Davis, "Abolition Democracy: Beyond Empire, Prisons, and Torture," pg. 93 | Literary Landscape | 2014"

9" x 12" (16" x 18" framed), INK on paper, 2014

Price: \$975.

Scan the QR code to see higher resolution versions of the paintings listed above



This pricelist specific to current, framed artwork. If you're interested in seeing older work, and/or other work from other projects like the TV Landscapes, Spacial Tendancies, or Jazz Portrait series, please email, text, or call for information on what is available.